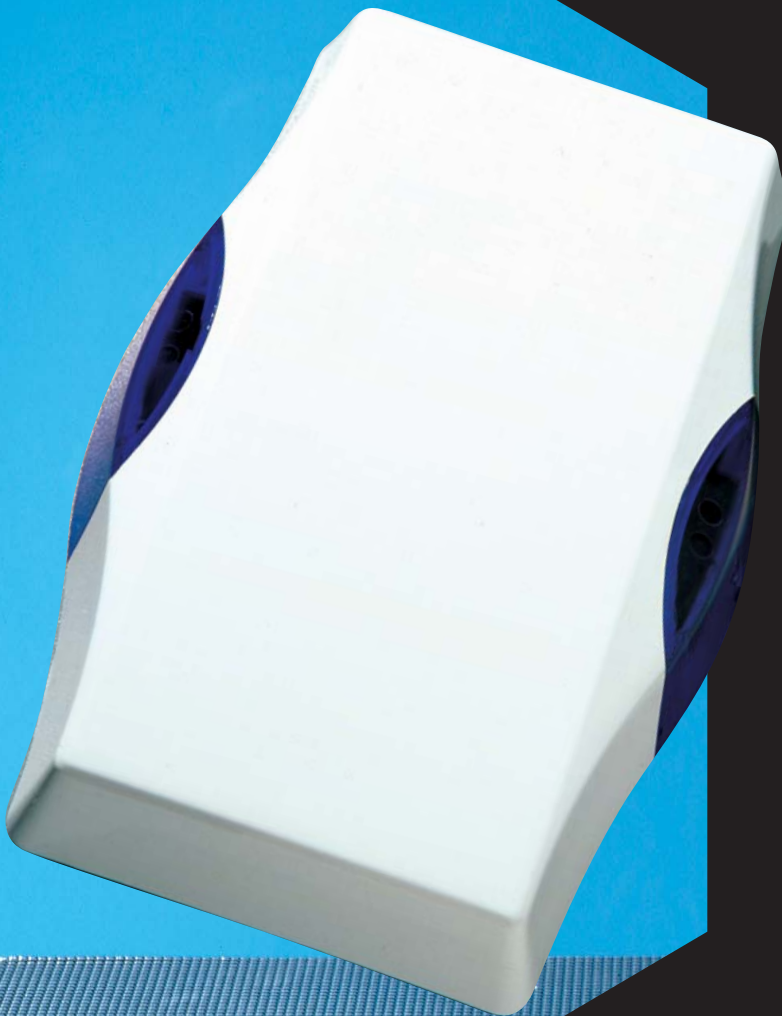


# STARLIGHT



## ELMDENE

Security & Fire  
Products



### *Benefits:*

Attractively shaped External Sounder  
Horizontal or vertical mounting  
'Engineer Friendly' for easy installation  
and maintenance  
Low current consumption and  
operational costs  
Low maintenance  
Economic multiple installations  
Individual Cover logo can be supplied

### *Features:*

- POLYCARBONATE COVER (3mm)
- STREAMLINED TWIN STROBES
- ELECTRONICS FULLY ENCLOSED
- DUAL PIEZO SOUNDERS
- TWIN LEDs (SELECTABLE ON 3000 MODEL)
- SINGLE PIEZO AND LED ON 020 MODEL
- 15 MINUTE CUT-OFF TIMER  
(SELECTABLE ON 3000 MODEL)
- SAB FACILITY WITH ON-BOARD  
12V NiMH BATTERY
- ENGINEER MODE FOR SILENT  
START-UP (ON 3000 MODEL)
- UNIVERSAL TRIGGER AND TAMPER
- BATTERY TEST POINT (ON 3000 MODEL)
- SCREEN PRINTING AVAILABLE

*External Sounders  
you can rely on*

[www.elmdene.co.uk](http://www.elmdene.co.uk)



INTRUDER



# STARLIGHT

## Specifications

All Sounders comply with the following standards:  
PD 6662:20004, EN50131-1:2004, EN50130-4, EN61000-6-3

SPECIFICATION	020E	2000	3000
Grade	3	3	3
Environmental Class	IV	IV	IV
No of Piezo's	1	2	2
Sound Output (dbA at 1m)	105	118	118
Operating Voltage - Nominal	12V-dc	12V-dc	12V-dc
Siren Operating Current	400mA	350mA	200mA
Strobe Operating Current	100mA	150mA	100mA
Standby - Quiescent Current	45mA	45mA	45mA
Cut Off Timer	15 min	15 min	selectable
LED's	single	twin	twin selectable
Silent Engineer Mode	n/a	n/a	yes
Internal Battery	6V/300mA-NiMH	12V/300mA-NiMH	6V/300mA-NiMH
Replaceable Battery	n/a	n/a	yes
Siren Trigger	pos/neg	pos/neg	pos/neg
Strobe Trigger	neg	neg	neg
Strobe Flash Rate	1/sec	1/sec	1/sec
Tamper Detection	cover/rear	cover/rear	cover/rear
Tamper Signal	neg	pos / neg / vf	pos / neg / vf
Optional Foam Detection	n/a	n/a	n/a
Drill Detection	n/a	n/a	n/a
SAB/SCB	sab	sab	sab
Piezo/battery status monitor	n/a	n/a	n/a
Fault Output	n/a	n/a	n/a
Choice of 4 Tones	n/a	n/a	n/a
Audible Tamper Closure	n/a	n/a	n/a
Base Plate	3mm	3mm	3mm
	Polycarbonate	Polycarbonate	Polycarbonate
Inner Cover	n/a	n/a	n/a
Outer Cover	3mm	3mm	3mm
	Polycarbonate	Polycarbonate	Polycarbonate
External Dimensions	315 x 215 x 65	315 x 215 x 65	315 x 215 x 65
Screen Printing Available	All Models	All Models	All Models

ELMDENE INTERNATIONAL LIMITED  
Rodney Road, Fratton, Portsmouth PO4 8SS United Kingdom  
Tel: +44 (0)23 9273 9412 Fax: +44 (0)23 9281 1631  
e-mail: sales@elmdene.co.uk



**ELMDENE**

Security & Fire  
Products

[www.elmdene.co.uk](http://www.elmdene.co.uk)